

EBURY STREET, SW1W



# FEATURES

- First Floor Living Space
- Newly Refurbished
- Spacious open plan,  
Kitchen/Reception room
- High Ceilings & Natural Light
- Double Bedroom with en-suite  
and built-in storage
- Additional Store plumbed for  
Washing Machine



EBURY STREET, SW1W

# DETAILS

## PRICE

£745,000 STC

## TENURE

Leasehold (999 years remaining)

## LOCAL AUTHORITY

City of Westminster

## SERVICE CHARGE

Approx £1,500 per annum

## COUNCIL TAX

Band D

## EPC

Rating D

9251-5059-2208-0982-5204

This one bedroom flat on Ebury Street has been recently refurbished to provide a fresh, stylish living space. The open-plan kitchen/reception room offers plenty of natural light and high ceilings, making it a versatile, inviting space whether that be for work, relaxation or hosting friends and family.

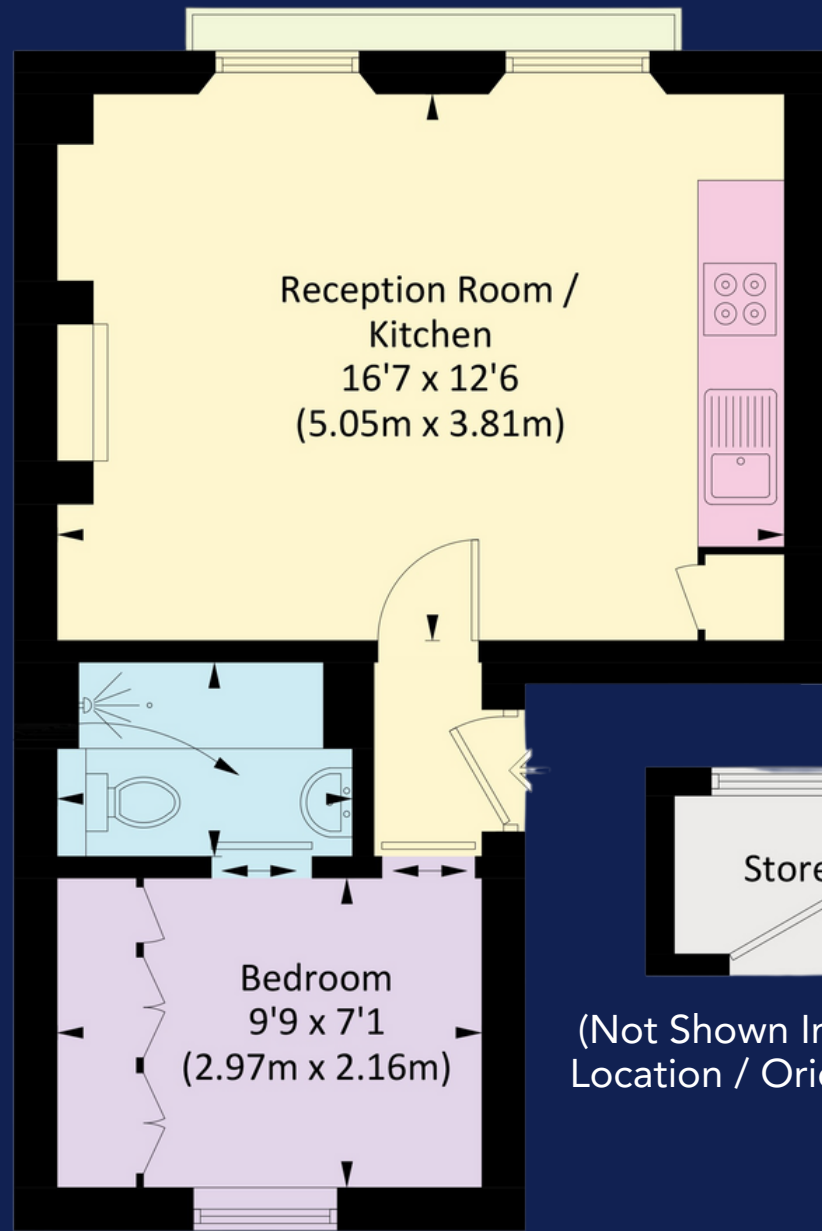
The bedroom is a good size complete with a modern en-suite shower room with marble finishes and built in storage, ensuring comfort and convenience. It's an excellent opportunity for both investors and those looking for a base in one of London's most prestigious, desirable neighbourhoods.

EBURY STREET, SW1W



# FLOOR PLAN

Approx. gross internal area  
355 Sq Ft. / 33 Sq M  
Store Approx. gross internal  
area 18 Sq Ft. / 1.7 Sq M



**First Floor**

Illustration for identification purposes only, measurements are approximate, not to scale. FloorplansUsketch.com © 2023 (ID1004514)

Wellbelove  
Quested  
PROPERTY CONSULTANTS

[sales@wellbelove-quested.com](mailto:sales@wellbelove-quested.com)

020 7881 0880

40 Eaton Terrace, Belgravia,  
London, SW1W 8TS

 [wellbelove-quested.com](https://www.wellbelove-quested.com)

Details Prepared October 2023

These particulars have been produced as a general guide for this property only and no other purpose. They are not an offer or contract. You should not rely on statements in these particulars or by word of mouth or in writing as being factually accurate about the property, its condition or its value. Neither any primary agent or joint agent has any authority to make or give any representations or warranties in relation to the property, and accordingly any information given is entirely without responsibility on the part of the agents or lessor(s). The photographs show only certain parts of the property as they appeared at the time they were taken. Any areas, measurements and distances given are approximate only. Any reference to alterations to, or use of, any part of the property does not mean that any necessary planning, building regulations or other consent has been obtained nor have any services, equipment or facilities been tested. A lessee should satisfy themselves by inspection or otherwise. The VAT position relating to the property may change without notice. Please contact us for further information regarding the approved Client Money Protection (CMP) scheme and the property redress scheme which we are a member of.