



Little Chester Street, SW1X

FEATURES



- 6 Bedrooms
- Bathroom
- En-suite Bathroom
- En-suite Shower Room
- Guest WC
- 2 Reception Rooms
- Dining Room
- Kitchen
- Study
- Garage
- Patio/Terrace
- Access to Belgrave Square Gardens (subject to application)

LITTLE CHESTER ST. SW1X



A six-bedroom townhouse nestled within the heart of Belgravia. The property encompasses six bedrooms, three bathrooms, a guest cloakroom, two reception rooms, a kitchen, dining hall, study, garage, a well-lit loft space, a patio/terrace and a sophisticated Lutron lighting system.



Little Chester Street is a very quiet, charming and picturesque street, located just off Eaton Square and Belgrave Square, with access points via Upper Belgrave Street or Grosvenor Place. Knightsbridge's renowned shops are about 0.8 miles away and Sloane Square is approximately 0.7 miles away. Motcomb Street and Elizabeth Street's café cultures are approximately 0.4 miles away, making it an extremely desirable place to live.

LITTLE CHESTER ST. SW1X



LITTLE CHESTER ST. SW1X



FLOOR PLANS & DETAILS

Approx. gross internal area
2,431sq ft. / 225.84 sq m
**for guidance only, not for
valuation purposes*

PRICE
£3,075,000 STC

TENURE
Leasehold
(expires 19/09/2056)

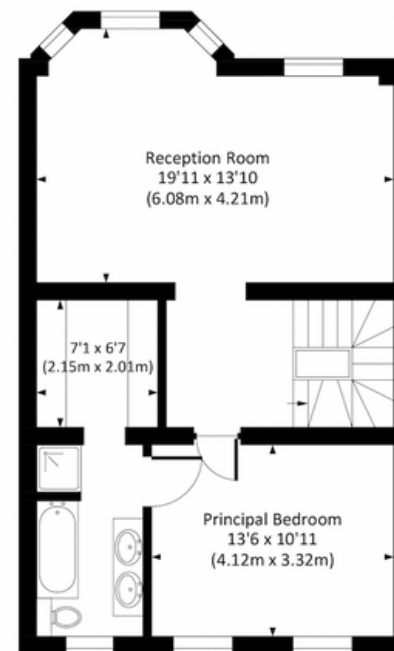
LOCAL AUTHORITY
City of Westminster

GROUND RENT
£200

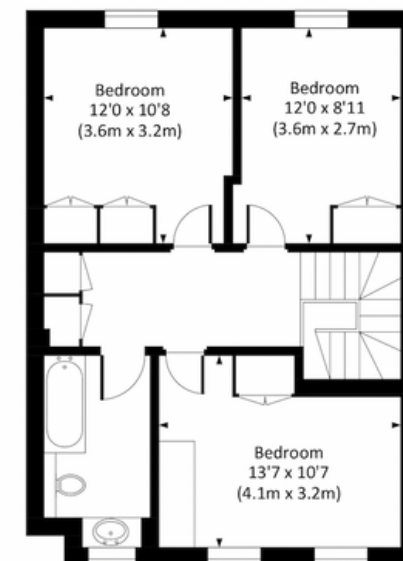
COUNCIL TAX
Band H

EPC
Rating C

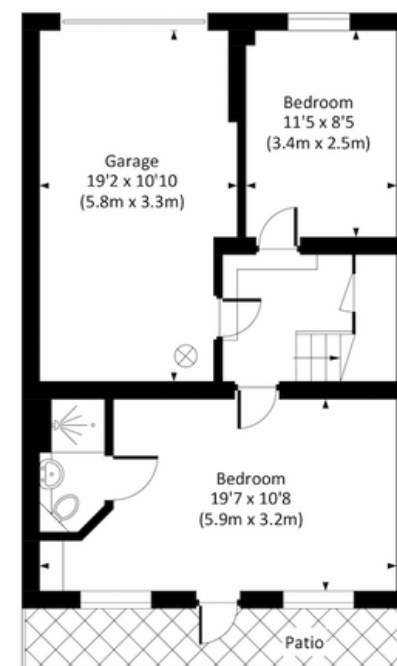
2600-0516-0822-8202-3573



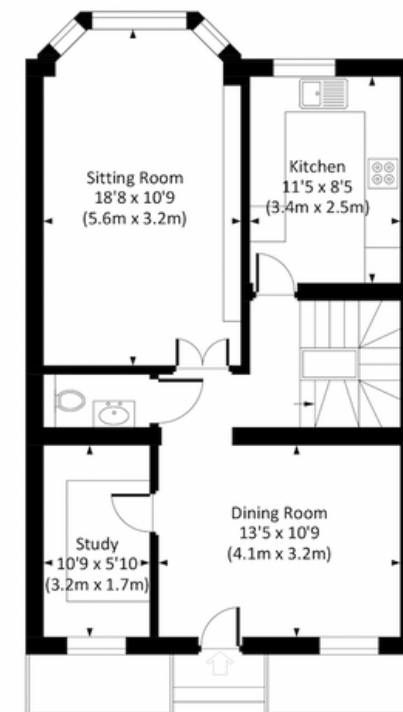
FIRST FLOOR



SECOND FLOOR



LOWER GROUND FLOOR



GROUND FLOOR



All measurements have been made in accordance with RICS code of Measuring Practice which are approximate only and only for illustrative purposes. For the avoidance of doubt, Dowling Jones Design shall not be liable for any reliance on these measurements. © 2023 www.dowlingjones.com 020 7610 9933

Wellbelove
Quested
PROPERTY CONSULTANTS

sales@wellbelove-quested.com

020 7881 0880

40 Eaton Terrace, Belgravia,
London, SW1W 8TS

 [wellbelove-quested.com](https://www.wellbelove-quested.com)

Details Prepared August 2023

These particulars have been produced as a general guide for this property only and no other purpose. They are not an offer or contract. You should not rely on statements in these particulars or by word of mouth or in writing as being factually accurate about the property, its condition or its value. Neither any primary agent or joint agent has any authority to make or give any representations or warranties in relation to the property, and accordingly any information given is entirely without responsibility on the part of the agents or lessor(s). The photographs show only certain parts of the property as they appeared at the time they were taken. Any areas, measurements and distances given are approximate only. Any reference to alterations to, or use of, any part of the property does not mean that any necessary planning, building regulations or other consent has been obtained nor have any services, equipment or facilities been tested. A lessee should satisfy themselves by inspection or otherwise. The VAT position relating to the property may change without notice. Please contact us for further information regarding the approved Client Money Protection (CMP) scheme and the property redress scheme which we are a member of.