



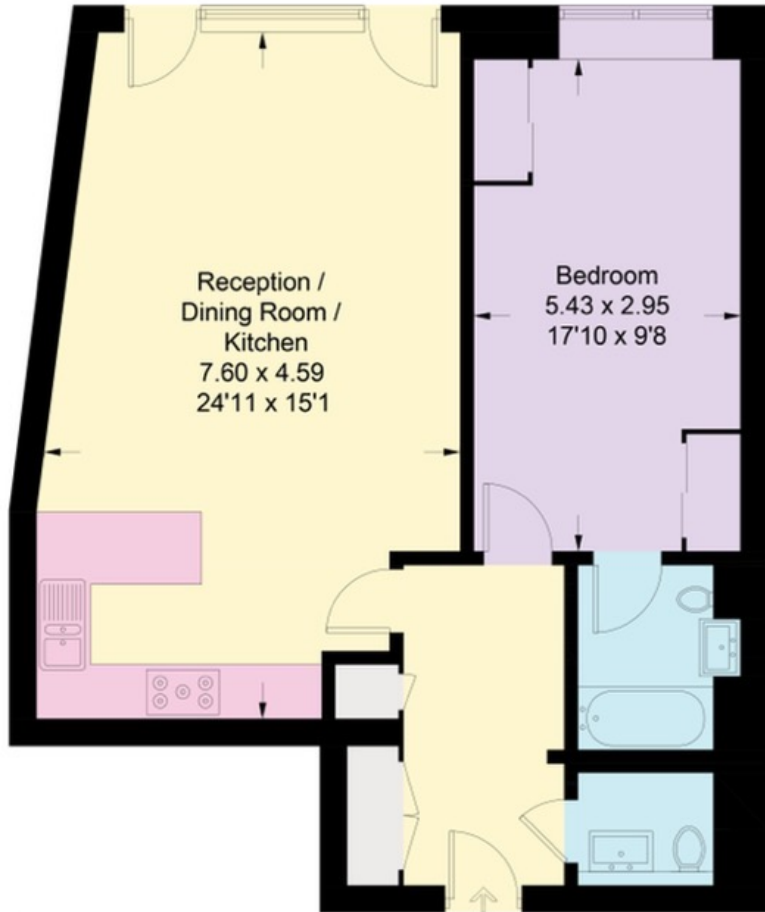
Kensington Church Street, W8



A stunning, furnished, one bedroom, 2 bathroom flat located in the highly sought-after area of Kensington. The flat boasts a bright, spacious and open plan reception/kitchen area with large windows allowing for plenty of natural light to flood in. This charming flat is within walking distance of both the trendy Notting Hill and the stylish Kensington areas, offering an abundance of shops, cafes, and restaurants to explore. A fantastic opportunity to live in one of London's most desirable neighborhoods!

Kensington Church Street, W8

Approximate Gross Internal Area = 64.8 sq m / 697 sq ft



Second Floor

Illustration for identification purposes only, measurements are approximate, not to scale. floorplansUsketch.com © (ID959059)

| Score | Energy rating | Current | Potential |
|-------|---------------|---------------|---------------|
| 92+ | A | | |
| 81-91 | B | 83 B | 84 B |
| 69-80 | C | | |
| 55-68 | D | | |
| 39-54 | E | | |
| 21-38 | F | | |
| 1-20 | G | | |

ACCOMMODATION

- Spacious entrance hallway
- Fully fitted open Plan Kitchen/Reception Room.
- Large double bedroom with built in storage and en suite bathroom
- Separate Guest WC
- Heating and Air Conditioning

PRICE

- £795pw

FURNISHINGS

- Furnished

TENANCY

- Long Let

Details prepared 25th April 2023



Wellbelove
Quested

PROPERTY CONSULTANTS

020 7881 0880

lettings@wellbelove-quested.com

Wellbelove-quested.com

Disclaimer These particulars have been produced as a general guide for this property only and no other purpose. They are not an offer or contract. You should not rely on statements in these particulars or by word of mouth or in writing as being factually accurate about the property, its condition or its value. Neither any primary agent or joint agent has any authority to make or give any representations or warranties in relation to the property, and accordingly any information given is entirely without responsibility on the part of the agents or lessor(s). The photographs show only certain parts of the property as they appeared at the time they were taken. Any areas, measurements and distances given are approximate only. Any reference to alterations to, or use of, any part of the property does not mean that any necessary planning, building regulations or other consent has been obtained nor have any services, equipment or facilities been tested. A lessee should satisfy themselves by inspection or otherwise. The VAT position relating to the property may change without notice. Please contact us for further information regarding the approved Client Money Protection (CMP) scheme and the property redress scheme which we are a member of.