

# Eaton Square, SW1W

33

33 34

34

AMESBELGRAVIA  
PROPERTY CONSULTANTS

T: 020 7730 1155

@amesbelgravia

www.amesbelgravia.co.uk

80 Ebury Street, London SW1W 9QD

Wellbelove  
Quested

PROPERTY CONSULTANTS

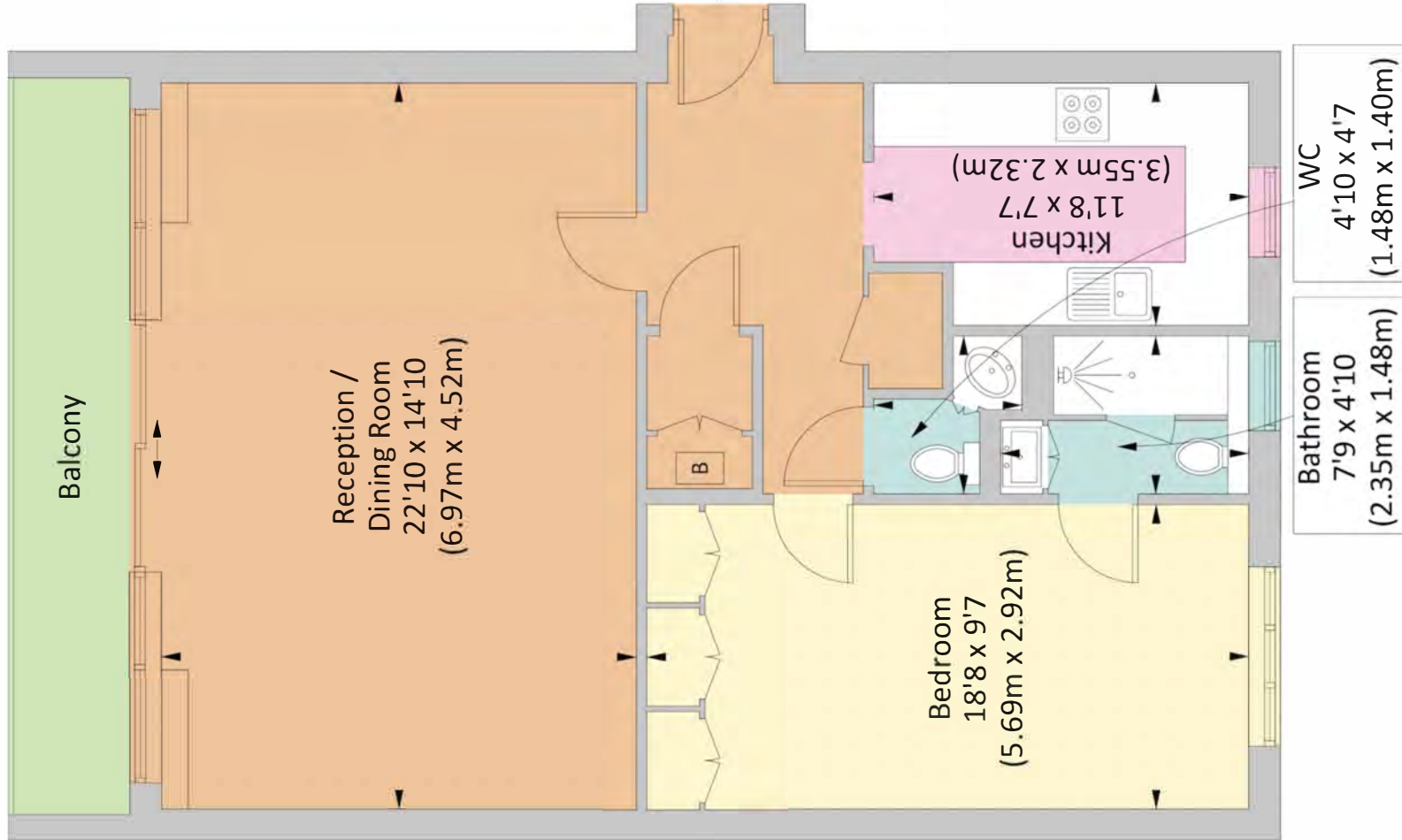


This spacious, One Bedroom Penthouse Apartment, positioned on the fourth floor, has a bright reception room leading on to balcony with views across the Square Gardens. Eaton Square is arguably the most famous residential location in Belgravia, with its beautiful white stucco fronted Grade II & Grade II\* Listed buildings and Central Gardens. The Square is ideally positioned for the excellent restaurants, shops and amenities of Elizabeth, Motcomb and Sloane Streets.



# EATON SQUARE, SW1

Approx. gross internal area 775 Sq Ft. / 72.0 Sq M



Third Floor

Illustration for identification purposes only, measurements are approximate, not to scale. FloorplansUsketch.com © 2023 (ID956138)

#### Features and Facilities:

Wide Entrance Hall: Principal Bedroom with En Suite Shower Room: Large Reception Room with Balcony: Kitchen: Guest WC: Lift: Caretaker: Use of Square Gardens subject to an annual fee  
Tennis Club: membership by arrangement via Grosvenor.

Tenure: Leasehold, approximately 4 years unexpired as at December 2023. Expires 23/06/2028

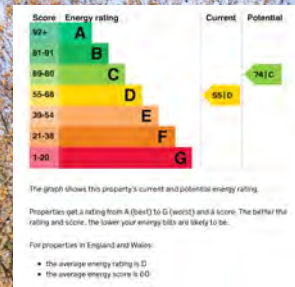
#### Service Charge:

TBC but in the region of £8,000 per annum.

Price: £295,000 STC

Video: <https://youtu.be/9Xp2tEnBr4Q>

Last updated May 2024



**AMESBELGRAVIA**  
PROPERTY CONSULTANTS

T: 020 7730 1155

@amesbelgravia

[www.amesbelgravia.co.uk](http://www.amesbelgravia.co.uk)

80 Ebury Street, London SW1W 9QD

**Wellbelove  
Quested**

PROPERTY CONSULTANTS

T: 020 7881 0880

E: [Sales@wellbelove-quested.com](mailto:Sales@wellbelove-quested.com)

[Wellbelove-quested.com](http://Wellbelove-quested.com)

40 Eaton Terrace, Belgravia, London, SW1W 8TS

Disclaimer These particulars have been produced as a general guide for this property only and no other purpose. They are not an offer or contract. You should not rely on statements in these particulars or by word of mouth or in writing as being factually accurate about the property, its condition or its value. Neither any primary agent or joint agent has any authority to make or give any representations or warranties in relation to the property, and accordingly any information given is entirely without responsibility on the part of the agents or lessor(s). The photographs show only certain parts of the property as they appeared at the time they were taken. Any areas, measurements and distances given are approximate only. Any reference to alterations to, or use of, any part of the property does not mean that any necessary planning, building regulations or other consent has been obtained nor have any services, equipment or facilities been tested. A lessee should satisfy themselves by inspection or otherwise. The VAT position relating to the property may change without notice. Please contact us for further information regarding the approved Client Money Protection (CMP) scheme and the property redress scheme which we are a member of.