

Grosvenor Street  
Mayfair, W1

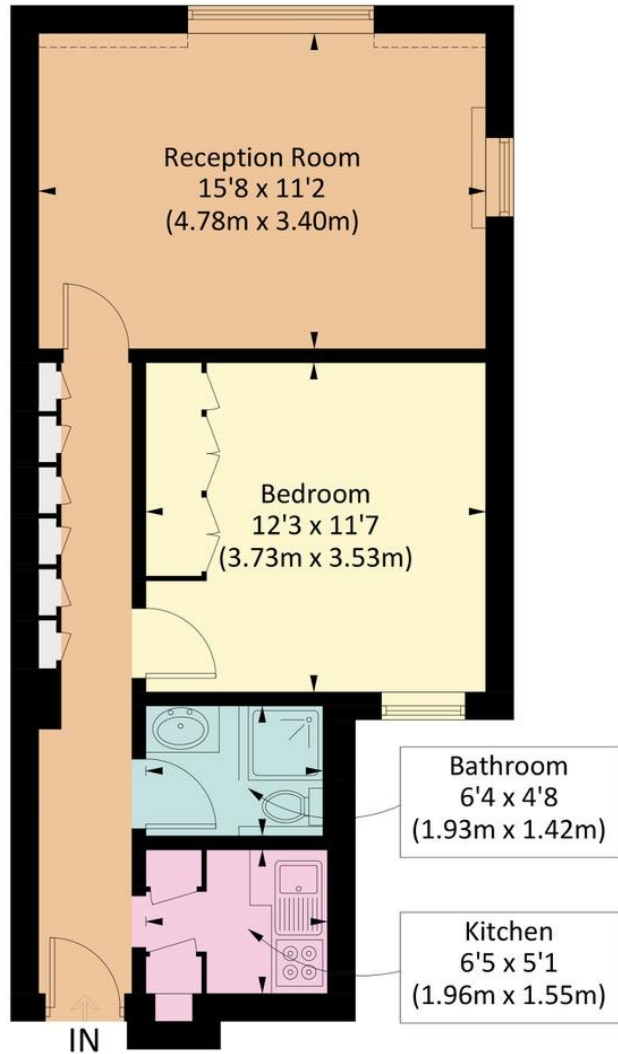




This charming one bedroom apartment is located on the 6th floor of this secure building in the heart of Mayfair. The apartment is within close proximity to all the shops, bars and restaurants that Mayfair has to offer. Grosvenor Street is located between three underground stations; Bond Street Station, Oxford Circus Station and 0.5 miles to Green Park Station.

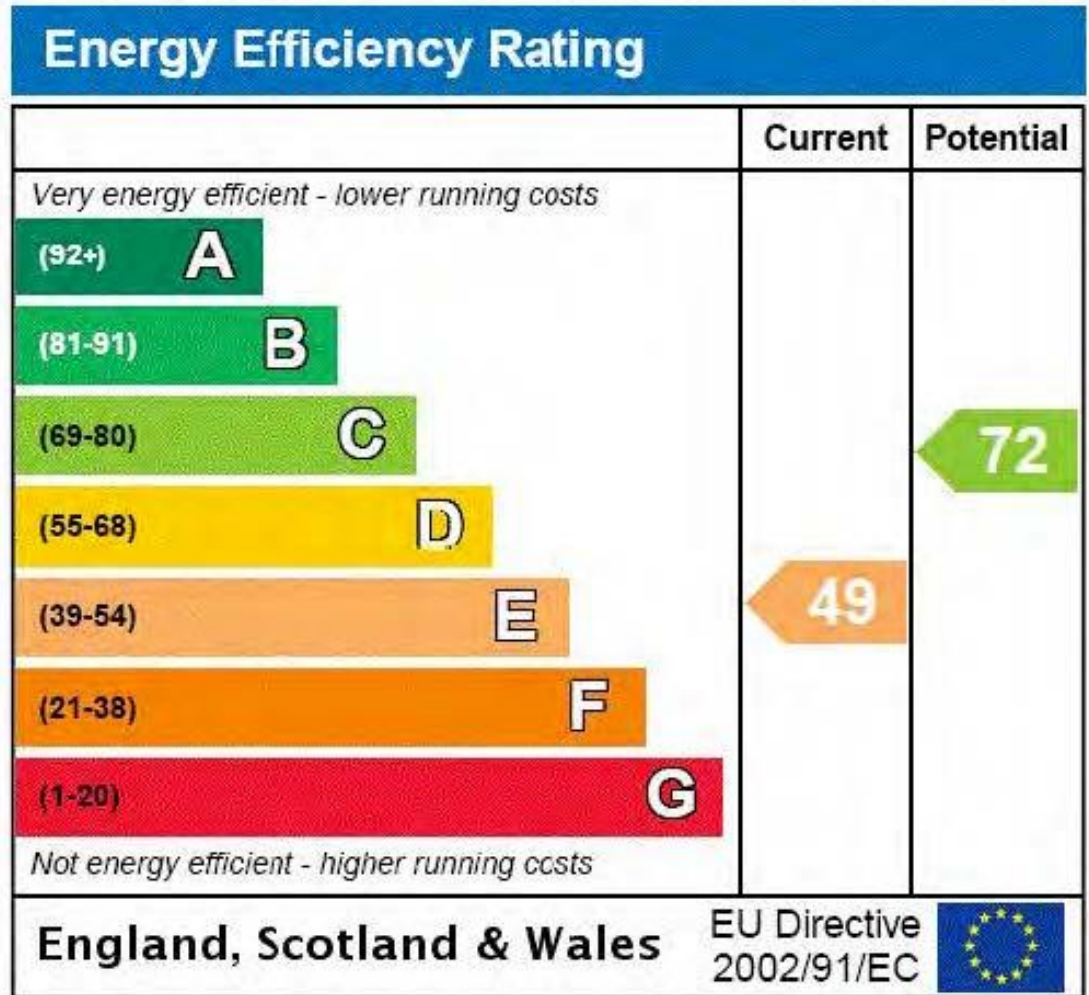
# GROSVENOR STREET

Approx. gross internal area 477 Sq Ft. / 44.3 Sq M



**Sixth Floor  
(477 Sq Ft.)**

Illustration for identification purposes only, measurements are approximate, not to scale. FloorplansUsketch.com © 2023 (ID938627)



Features and Facilities;  
Large Reception Room, Bedroom, Shower Room,  
Kitchen, Porter, Lift.

Tenure;  
Leasehold (23/12/2009 - 29/09/2134)  
111 and a half years unexpired.

Ground Rent;  
TBC

Service Charge;  
TBC

Price;  
£995,000 STC

Details Prepared 21st February 2023

Wellbelove  
Quested

PROPERTY CONSULTANTS

020 7881 0880  
[Sales@wellbelove-quested.com](mailto:Sales@wellbelove-quested.com)  
[wellbelove-quested.com](http://wellbelove-quested.com)



Disclaimer These particulars have been produced as a general guide for this property only and no other purpose. They are not an offer or contract You should not rely on statements in these particulars or by word of mouth or in writing as being factually accurate about the property, its condition or its value. Neither any primary agent or joint agent has any authority to make or give any representations or warranties in relation to the property, and accordingly any information given is entirely without responsibility on the part of the agents or lessor(s). The photographs show only certain parts of the property as they appeared at the time they were taken. Any areas, measurements and distances given are approximate only. Any reference to alterations to, or use of, any part of the property does not mean that any necessary planning, building regulations or other consent has been obtained nor have any services, equipment or facilities been tested. A lessee should satisfy themselves by inspection or otherwise. The VAT position relating to the property may change without notice. Please contact us for further information regarding the approved Client Money Protection (CMP) scheme and the property redress scheme which we are a member of.