



Lennox Gardens, SW1X

Lennox Gardens, SW1X

A fabulous, contemporary two-to-three-bedroom ground floor apartment in a red brick period building, overlooking the manicured Lennox Gardens. Lennox Gardens is located immediately south of Walton Street adjacent to Pont Street and Milner Street.

The property has recently been renovated to an excellent standard and encapsulates all required appliances. With 3 reception rooms there is ample space to choose the right layout of the flat for your requirements.



The property is well positioned for the many boutique shops and superb restaurants along Walton Street and Brompton Cross as well as the high street and designer shopping along the Brompton Road and Sloane Street.

- Unfurnished
- Terrace
- Premier garden Square
- Newly Refurbished
- Large period windows
- Wooden Flooring



- Knightsbridge (Piccadilly Line) 0.3 miles
- Sloane Square (District & Circle Line) 0.5 miles

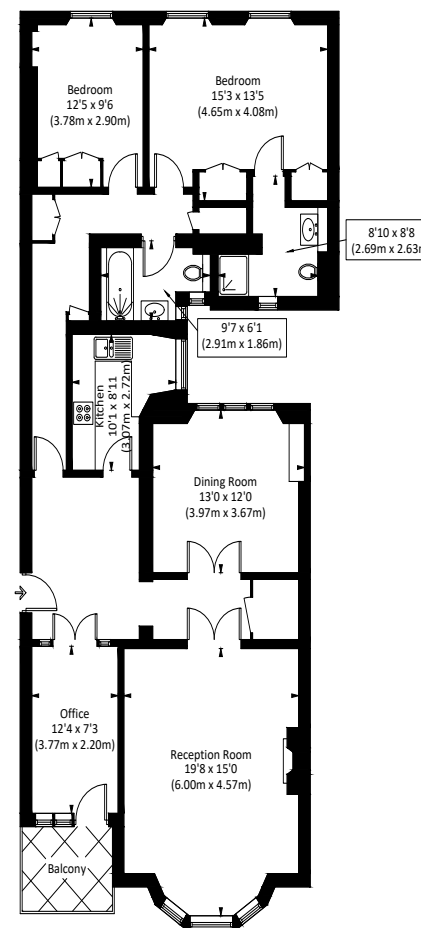






LENNOX GARDENS, SW1

Approx. gross internal area 1383 Sq Ft. / 128.5 Sq M



Raised Ground Floor

Illustration for identification purposes only, measurements are approximate, not to scale. FloorplansUsketch.com © 2021 (ID803949)

**Wellbelove
Quested**

PROPERTY CONSULTANTS

020 7881 0880

160 Ebury Street
(Corner of Eaton Terrace)
Belgravia
London SW1W 9JR

wellbelove-quested.com

**LON
RES**

onTheMarket.com

Zoopla.co.uk