

Eaton Square, Belgravia,  
SW1



Wellbelove  
Quested  
PROPERTY CONSULTANTS





# Eaton Square, Belgravia, SW1

A very smart one bedroom penthouse apartment situated on the south side of this famous square. The spacious property, which is positioned on the fourth floor, has a bright reception room leading onto a balcony with an electrically operated awning and views across the Square gardens.



Eaton Square is arguably the most famous residential location in the world, with its beautiful white stucco fronted Grade II\* Listed buildings and central gardens. The Square is ideally positioned for the excellent restaurants, shops and amenities on Elizabeth, Motcomb and Sloane Streets.





## FEATURES

- Wide Entrance Hall
- Master Bedroom with En-Suite Bathroom
- Large Reception Room with Balcony and Awning
- Kitchen
- Guest WC
- A/C
- Lift
- Caretaker
- Use of Square Gardens and Tennis Court (Subject to Annual Fee)

## TENURE

From and including 17 December 2013 and expiring on 24 December 2033 (11 years 8 months) - (Subject to negotiation with Grosvenor Estate there may be the possibility to top the lease up to another full 20 years).

## PRICE

£875,000 Subject to Contract

## SERVICE CHARGE

Approx £8,000 per annum

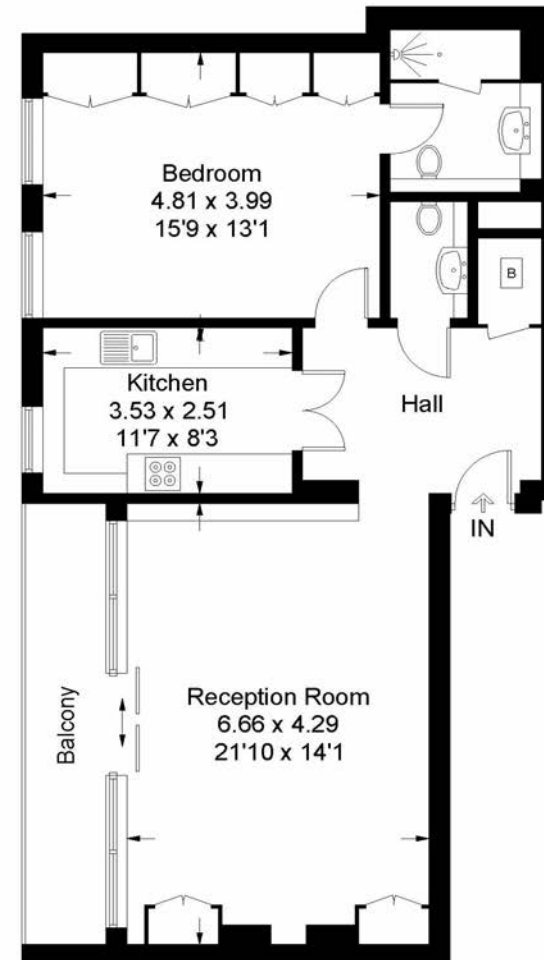
## LOCAL AUTHORITY

Westminster

We can supply a walk through video on request.

## Penthouse Apartment F, Eaton Square, SW1

Approximate Gross Internal Area = 77.5 sq m / 834 sq ft



Fourth Floor

Wellbelove  
Quested

PROPERTY CONSULTANTS

**020 7881 0880**

160 Ebury Street  
(Corner of Eaton Terrace)  
Belgravia  
London SW1W 9JR

[wellbelove-quested.com](http://wellbelove-quested.com)





#### Disclaimer

These particulars have been produced as a general guide for this property only and no other purpose. They are not an offer or contract. You should not rely on statements in these particulars or by word of mouth or in writing as being factually accurate about the property, its condition or its value. Neither any primary agent or joint agent has any authority to make or give any representations or warranties in relation to the property, and accordingly any information given is entirely without responsibility on the part of the agents or lessor(s).

The photographs show only certain parts of the property as they appeared at the time they were taken. Any areas, measurements and distances given are approximate only. Any reference to alterations to, or use of, any part of the property does not mean that any necessary planning, building regulations or other consent has been obtained nor have any services, equipment or facilities been tested. A lessee should satisfy themselves by inspection or otherwise. The VAT position relating to the property may change without notice. Please contact us for further information regarding the approved Client Money Protection (CMP) scheme and the property redress scheme which we are a member of.

Details Prepared 23rd March 2022

