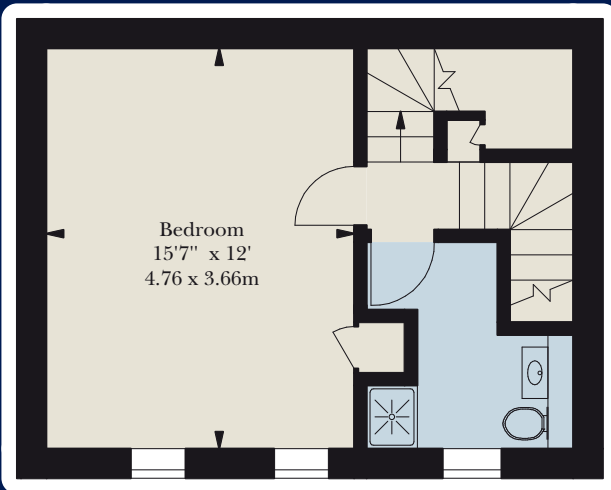


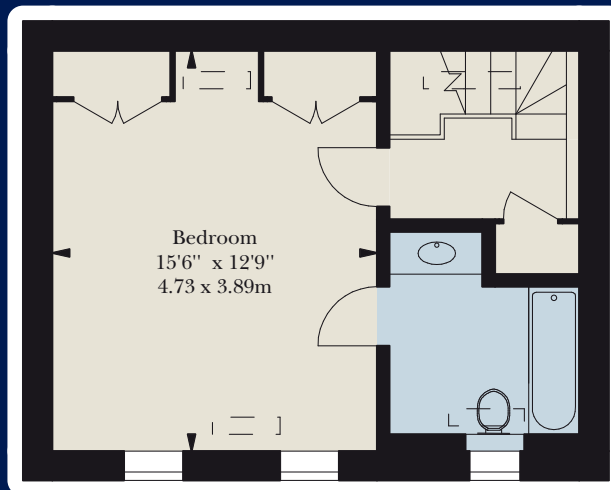
3 Ebury Mews

BELGRAVIA SW1

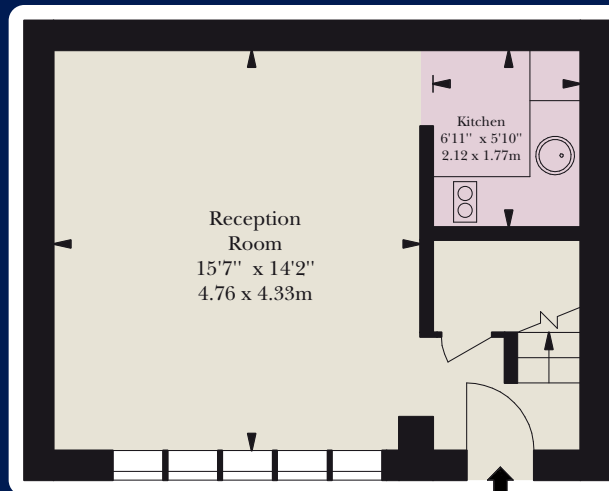




First Floor



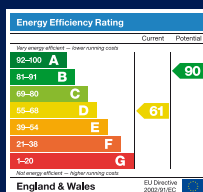
Second Floor



Ground Floor



© CGP DESIGN LTD



A delightful two bedroom, two bathroom house arranged over three floors situated in this well-known cobbled mews. The property is located to the south of Chester Square positioned between Eccleston and Elizabeth Street benefitting from the boutique shops and restaurants in Belgravia, Sloane Square, King's Road and Knightsbridge.

ACCOMMODATION & AMENITIES

- Master Bedroom Suite
- Second Bedroom
- Bathroom
- Reception Room
- Kitchen
- Storage Cupboard
- Mews Parking by arrangement with Grosvenor

TENURE: Freehold

LOCAL AUTHORITY: City of Westminster

PRICE: On Application

Approximate Gross Internal Area

952 sq ft / 88.4 sq m



Wellbelove Quested

PROPERTY CONSULTANTS

020 7881 0880

160 Ebury Street
(Corner of Eaton Terrace)
Belgravia
London SW1W 9JR

wellbelove-quested.com



NB: We wish to advise prospective purchasers that these sales particulars are believed to be correct, but their accuracy is in no way guaranteed, nor do they form part of any contract. We have not carried out a detailed survey nor tested the services, appliances or specific fittings. Measurements are approximate. February 2013. CGP12157-JA05L. Photography and brochure by cgpdesign.com 020 7222 7222